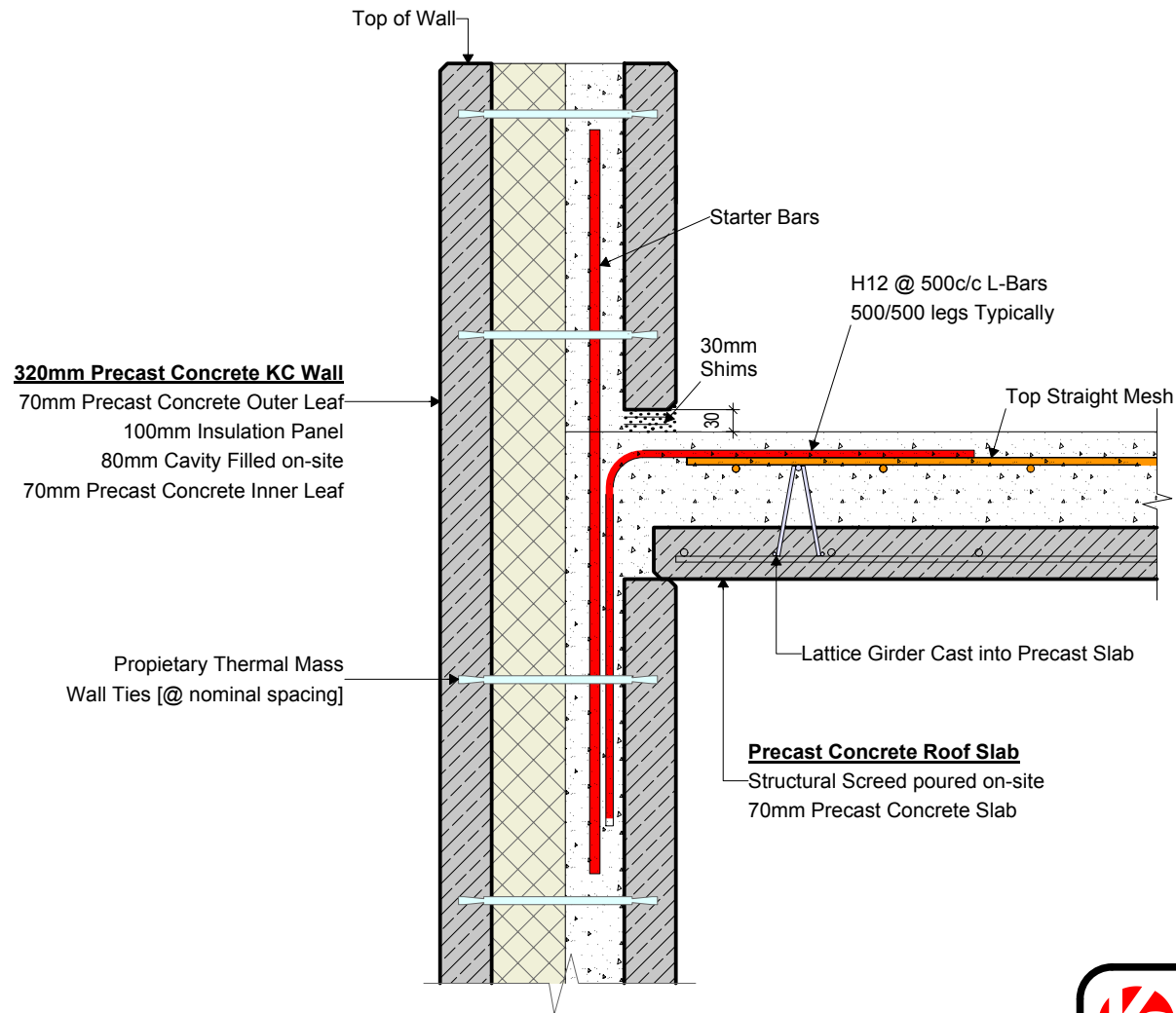



KC207 - Extended Parapet Detail



 KEEGAN PRECAST PRECAST TWIN WALL & FLOOR PRODUCTS	Trammon, Rathmolyon, Co. Meath IRL Tel: +353 (0)46 95 55116 UK Tel: +44 (0)131 516 7507 +44 (0)203 432 4901 Email: info@keeganprecast.com	
	Type:	Typical Precast KC Wall Details
Detail:	KC207 - Extended Parapet Detail	
Drawn by: MT	Date: 30/01/2017	Scale: 1:10

H/W = 210 / 297 (0.06m²)