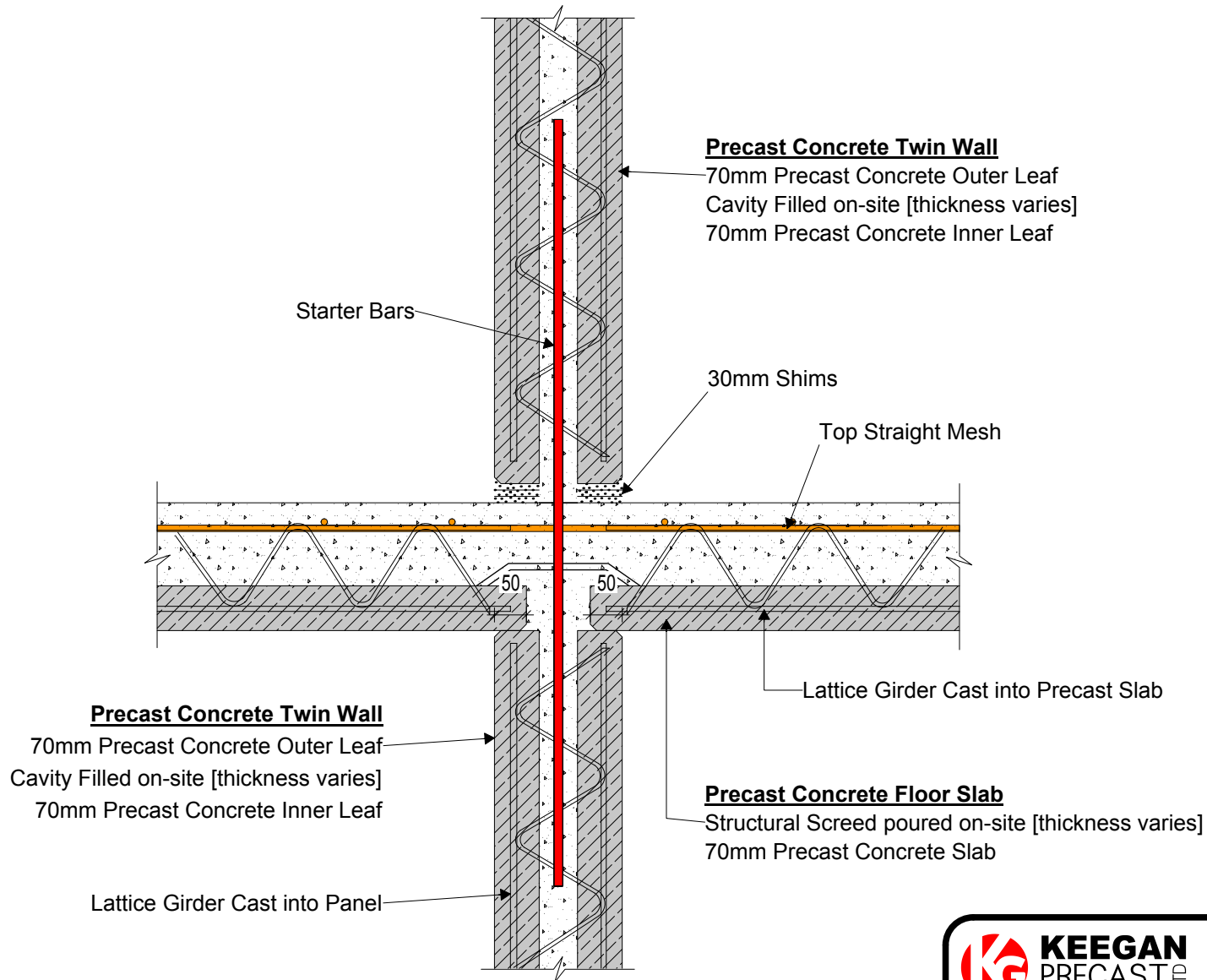



TW110 - Internal Vertical Section



 <p>KEEGAN PRECAST PRECAST TWIN WALL & FLOOR PRODUCTS</p>		<p>Trammon, Rathmolyon, Co. Meath IRL Tel: +353 (0)46 95 55116 UK Tel: +44 (0)131 516 7507 +44 (0)203 432 4901 Email: info@keeganprecast.com</p>
Type:	Typical Precast Twin Wall Details	
Detail:	TW110 - Internal Vertical Section	
Drawn by: MT	Date: 01/02/2017	Scale: 1:10