

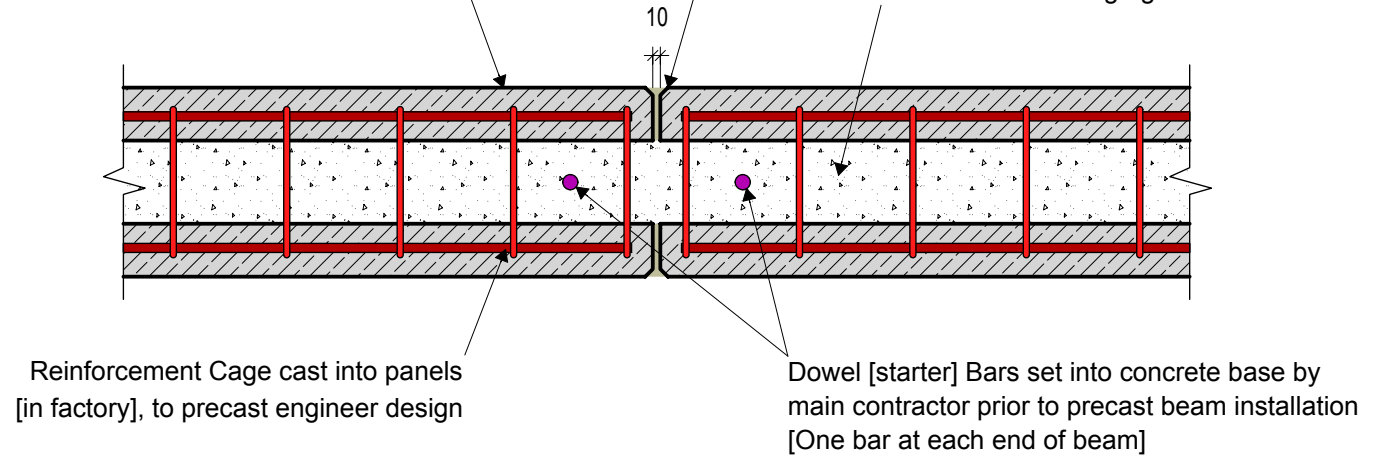
# TW113 - Twinwall Beam Sections

## Precast Twin Wall Beam

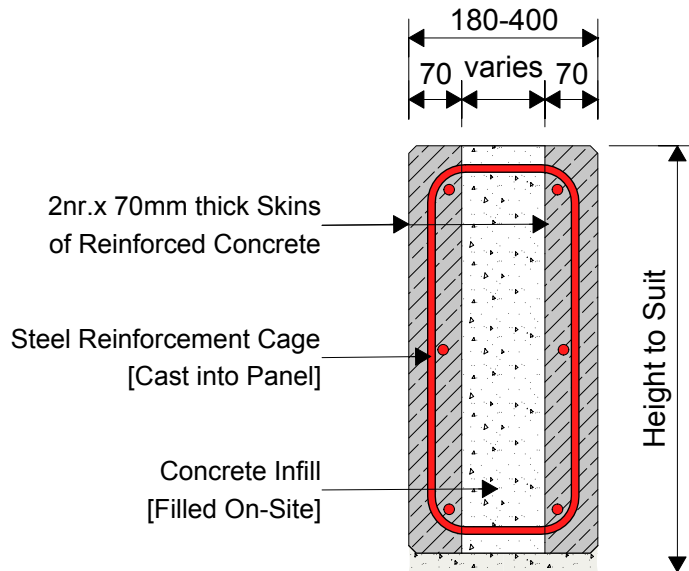
70mm Precast Concrete Outer Leaf  
 Cavity Filled on-site [thickness varies]  
 70mm Precast Concrete Inner Leaf

Typical 10mm Panel Joint


Cavity Infill [min 80mm thk] filled on-site with high grade concrete



## Typical End Connection at Conc. Base



Typical Vertical Section thru Beam

 <p><b>KEEGAN PRECAST</b>                  PRECAST TWIN WALL &amp; FLOOR PRODUCTS</p>		Trammon, Rathmolyon, Co. Meath IRL Tel: +353 (0)46 95 55116 UK Tel: +44 (0)131 516 7507 +44 (0)203 432 4901 Email: info@keeganprecast.com
Type:	Typical Precast Twinwall Beam Details	
Detail:	TW113 - Twinwall Beam Sections	
Drawn by: MT	Date: 30/01/2017	Scale: 1:10