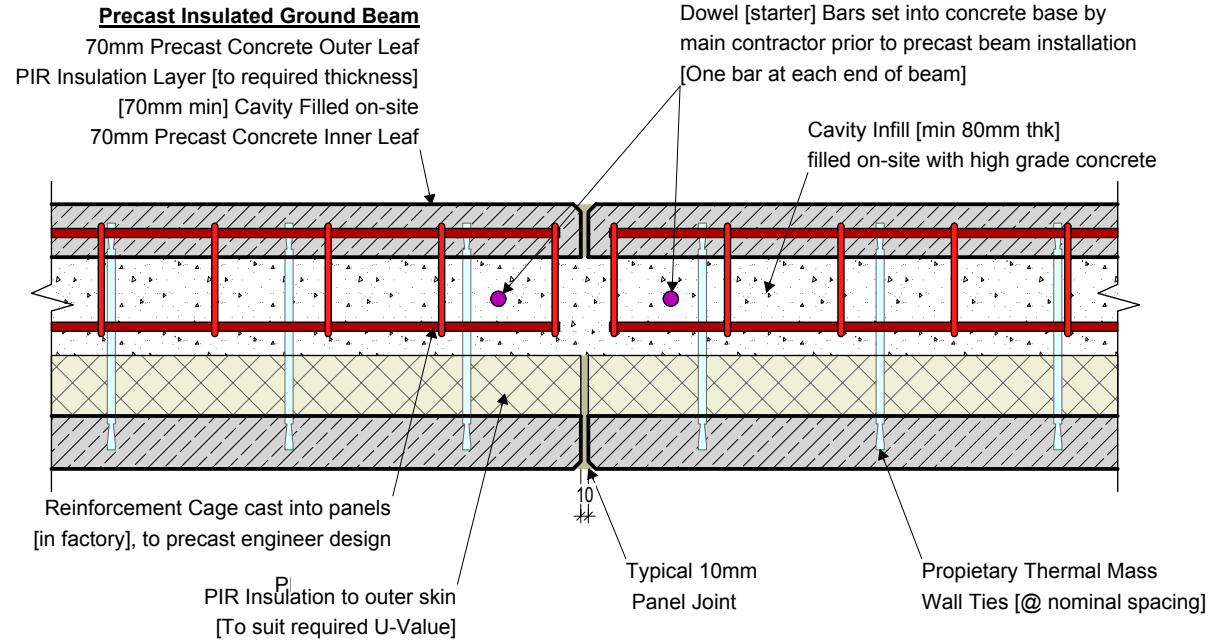
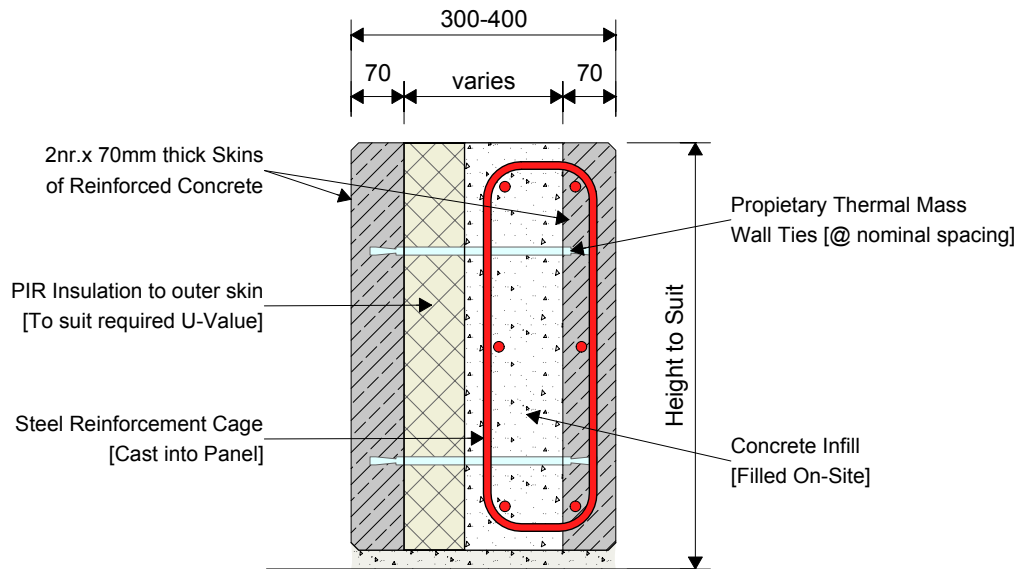



# KC209 - Insulated Ground Beam Sections



**Typical End Connection at Conc. Base**



**Typical Vertical Section thru Beam**

 <b>KEEGAN PRECAST</b> PRECAST TWIN WALL & FLOOR PRODUCTS	Trammon, Rathmolyon, Co. Meath IRL Tel: +353 (0)46 95 55116 UK Tel: +44 (0)131 516 7507 +44 (0)203 432 4901 Email: info@keeganprecast.com	
	Type:	<b>Typical Precast Ground Beam Details</b>
Detail:	<b>KC209 - Insulated Ground Beam Sections</b>	
Drawn by: MT	Date: 30/01/2017	Scale: 1:10