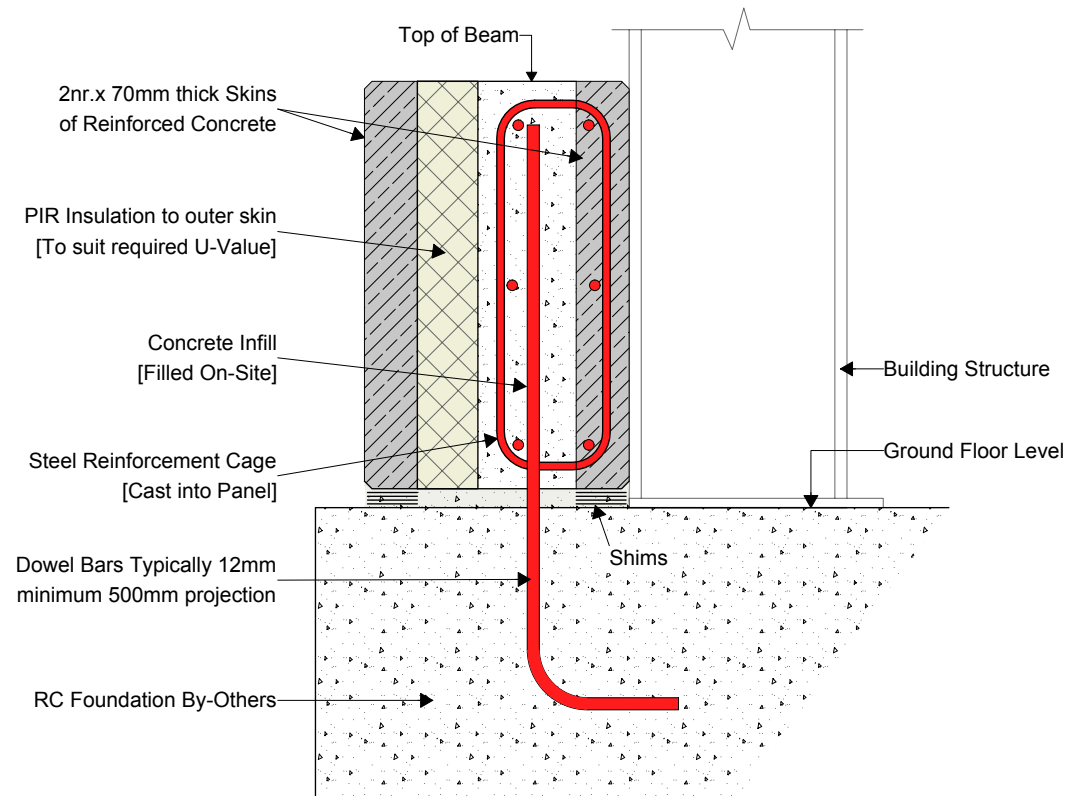



# KC210 - Insulated Ground Beam Base Detail



 <p><b>KEEGAN PRECAST</b> PRECAST TWIN WALL &amp; FLOOR PRODUCTS</p>		<p>Trammon, Rathmolyon, Co. Meath  <b>IRL Tel:</b> +353 (0)46 95 55116  <b>UK Tel:</b> +44 (0)131 516 7507          +44 (0)203 432 4901  <b>Email:</b> info@keeganprecast.com</p>
Type:	<b>Typical Precast Ground Beam Details</b>	
Detail:	<b>KC210 - Insulated Ground Beam Base Detail</b>	
Drawn by: <b>MT</b>	Date: 30/01/2017	Scale: 1:10

H/W = 210 / 297 (0.06m<sup>2</sup>)