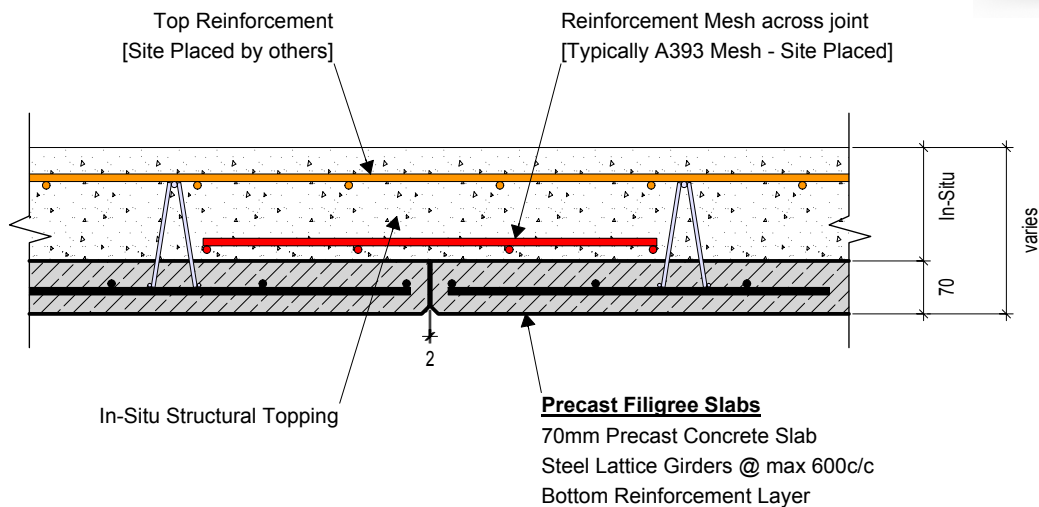
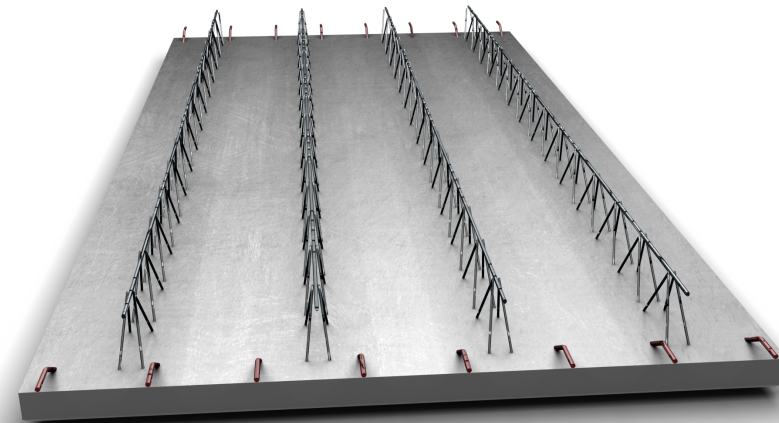



PC301 - Typical Section Thru Slab



 KEEGAN PRECAST PRECAST TWIN WALL & FLOOR PRODUCTS	Trammon, Rathmolyon, Co. Meath IRL Tel: +353 (0)46 95 55116 UK Tel: +44 (0)131 516 7507 +44 (0)203 432 4901 Email: info@keeganprecast.com	
	Type:	Typical Precast KC Wall Details
Detail:	PC301 - Typical Section Thru Slab	
Drawn by: MT	Date: 30/01/2017	Scale: 1:10